

Unlocking the full potential of GSP

Each of the nine GSP360 tracts has the potential to be developed in its entirety or subdivided into distinct parcels to suit individual tenant needs. Each tract offers unique features and characteristics helping to ensure that the overall development is both robust and diverse in nature. Optimal uses for the GSP360 tracts include but are not limited to:

- Aviation
- Aviation Support
- Logistics/Distribution
- Office
- Retail
- Industrial
- Service
- Hospitality
- Flex/R&D
- Recreation/Public



Committed to progress now and in the future

GSP provides a productive and sustainable environment that benefits both the residents who call the Upstate home and corporations that wish to call GSP360 home. The goal of the GSP360 development team is to establish partnerships that will result in the successful and responsible development of all nine tracts.

GSP360

Beyond the runway



Learn more about opportunities that exist beyond the runway.

Visit us online at

GSP360beyondtherunway.com

or call **864.848.6208**.



GSP360

Beyond the runway

Developing the next generation of excellence at Greenville-Spartanburg International Airport



The GSP360 Mission

GSP360 is a land use program committed to the legacy of carefully considered, responsible, sustainable and environmentally sensitive growth and development. Focused on serving the needs of business partners, tenants and the community, GSP360 will support and fuel continued economic growth and development of the Upstate Region.

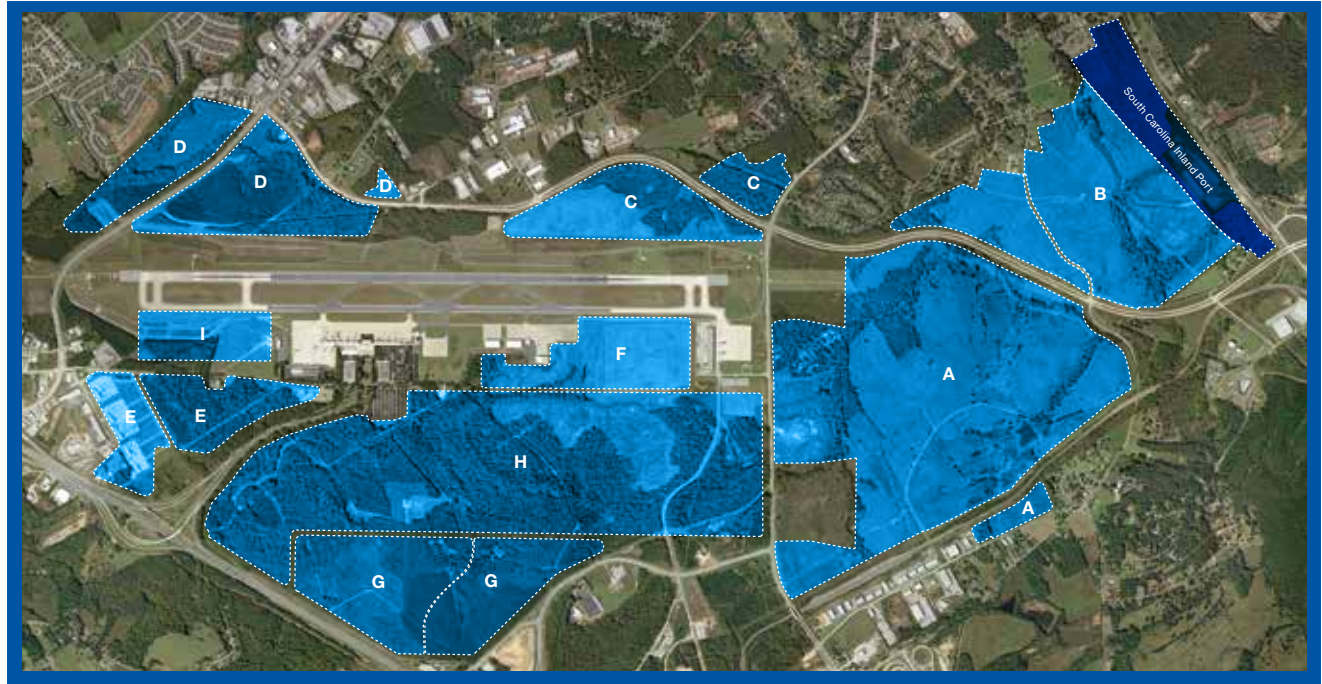
GSP360 — Growth and improvement in every direction

GSP360 is a group of nine outstanding developable tracts of land at Greenville-Spartanburg International Airport (GSP). These nine tracts represent unprecedented opportunities for Aviation, Logistics, Flex/Research & Development, Industrial, Office and Service related industries. In addition, there is superb access to air, rail, interstate and the South Carolina Inland Port. This is the place for those who recognize the value of an outstanding location.

A unique opportunity in the Upstate of South Carolina

GSP is recognized as one of the nation's most user-friendly airports for passenger travel. Now GSP360 will boost the Upstate to the top of the list for those looking to establish or expand their footprint in this dynamic and thriving region of South Carolina.

Greenville-Spartanburg International Airport Land Use Plan



At the heart of the Greenville-Spartanburg International Airport growth plan are nine outstanding tracts of land, each with its own features and opportunities.

TRACT A

Encompassing 746 acres, this tract offers excellent highway frontage as well as rail frontage.

TRACT B

Encompassing 315 acres, this tract offers excellent highway and direct SC Inland Port access.

TRACT C

This 122-acre tract offers extensive runway frontage adjacent to existing aviation facilities.

TRACT D

With excellent location, shape and size, this 229-acre tract offers a variety of development options.

TRACT E

This high-visibility, 156-acre tract fronts I-85 before wrapping around to the airport's secondary entrance.

TRACT F

Situated along the east side of the runway, this 82-acre tract is ideal for general aviation, MRO and cargo.

TRACT G

Featuring more than 250 acres, this is a premier tract offering excellent visibility along I-85.

TRACT H

Home to the future parallel runway, this tract is well suited for interim or shorter term development.

TRACT I

This 69-acre tract features frontage along GSP's runway and secondary entrance.