




GSP360
Beyond the runway

Developing the next generation of excellence
at Greenville-Spartanburg International Airport

Aviation • Logistics • Flex/R&D • Industrial • Office • Service



Greenville-Spartanburg International Airport — A legacy of excellence

Since opening on October 15, 1962, the Greenville-Spartanburg International Airport (GSP) has evolved into one of the most recognized and respected airports in the country. Named the “2011 Fastest Growing Small Airport in the United States” by *Airline and Airport News & Analysis*, GSP is something special. A user-friendly airport with outstanding passenger service and a strong air cargo market, GSP is well positioned for responsible growth and development.

Expanding the vision of GSP

The idea of growth is nothing new to GSP. Since its inception, GSP has focused on optimizing the true potential of the airport. GSP enhances the economic development of the area by the services it provides and the businesses it helps to attract. Greenville-Spartanburg International Airport is Upstate South Carolina’s gateway to the world.

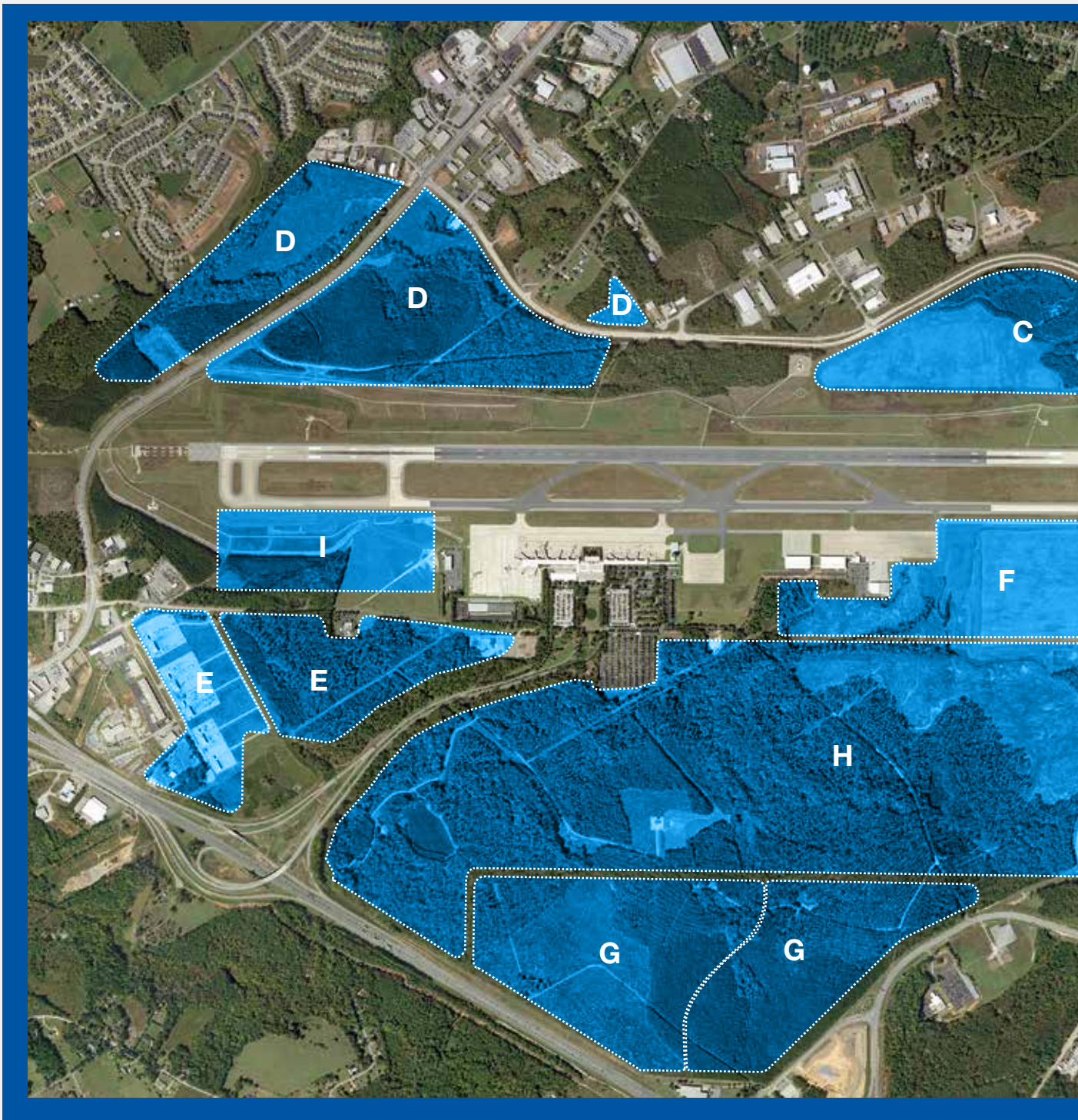
GSP360 will guide future development on the 3,500-acre campus of GSP. The continued growth and development of the GSP360 tracts will help fuel the economic engine that is Upstate South Carolina. GSP360 promises to provide a carefully considered, sustainable and environmentally sensitive approach to progress. This approach will serve the needs of the Upstate while providing a variety of opportunities for organizations from around the globe.

GSP360
Beyond the runway

The ideal location

Few regions in America have experienced sustained growth and development the way the South Carolina Upstate has. Despite unsteady economic conditions across the country and around the world, the Upstate has continued to attract national and international corporations, welcoming one headquarters after another. The combination of a business-friendly environment, outstanding work force, unmatched intermodal transportation, a convenient and central location along the popular I-85 corridor and a remarkable lifestyle stand atop a seemingly endless list of reasons why more and more companies are choosing to call the Greenville-Spartanburg-Anderson area home. Now, with the addition of the new South Carolina Inland Port, the possibilities available through GSP360 are even more alluring for companies of every size and type.





GSP360 Master Plan

The property surrounding Greenville-Spartanburg International Airport has been divided into nine distinct tracts, which can be subdivided into parcels based upon the highest and best use analysis as well as specific wants and needs of tenants. Each tract offers its own possibilities, features and characteristics. While there is a plan in place to regulate the phasing of the project and the timing of tract releases, GSP remains flexible. As such, all tracts are available for immediate development should suitable tenants be found and their plans align with the vision for GSP. Additional details about each specific tract and the opportunities it presents are available online at GSP360beyondtherunway.com.

TRACT A

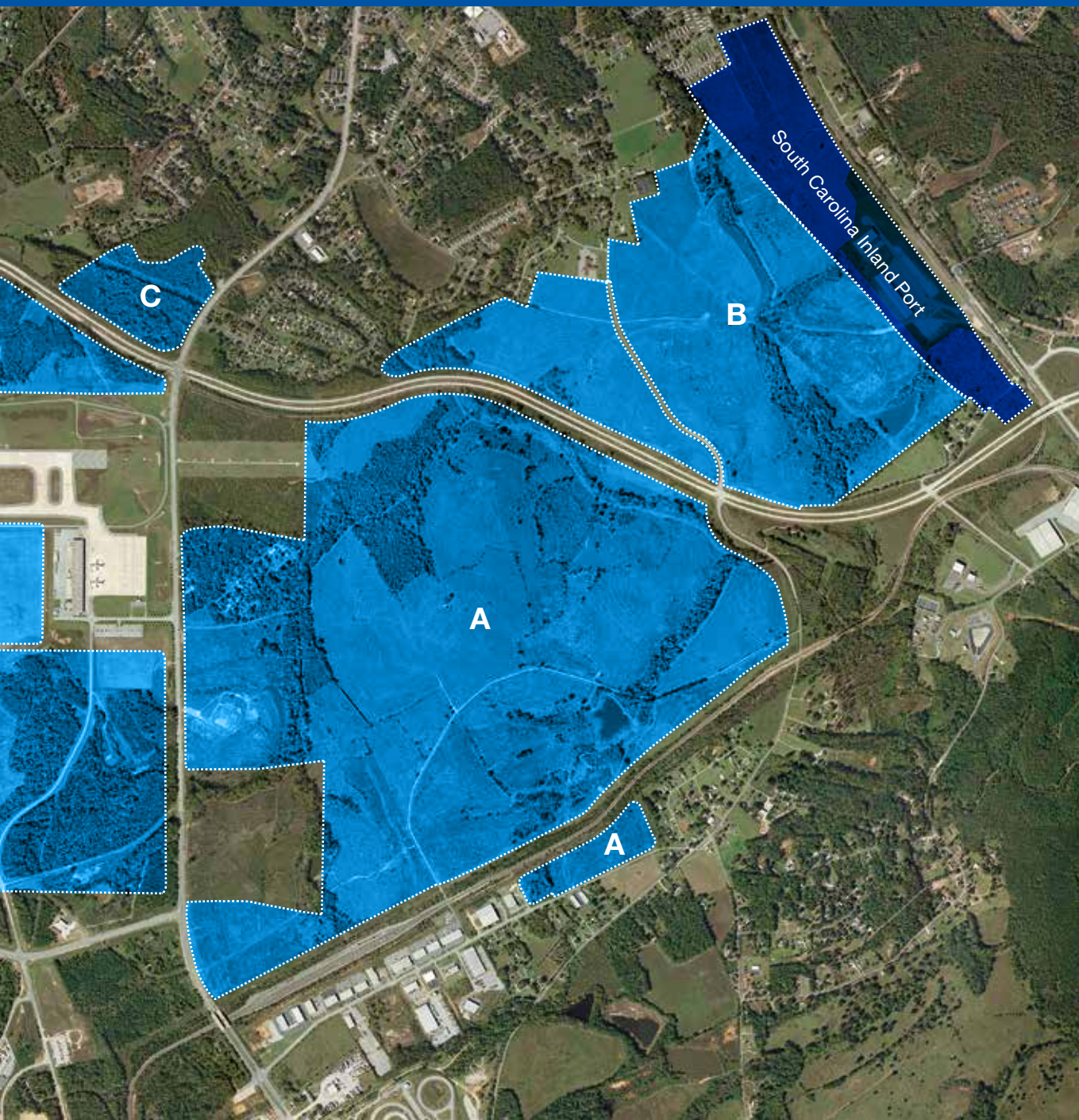
Encompassing 746 acres, this tract offers excellent highway frontage as well as rail frontage.

TRACT B

Encompassing 315 acres, this tract offers excellent highway and direct SC Inland Port access.

TRACT C

This 122-acre tract offers extensive runway frontage adjacent to existing aviation facilities.



TRACT D

With excellent location, shape and size, this 229-acre tract offers a variety of development options.

TRACT E

This high-visibility, 156-acre tract fronts I-85 before wrapping around to the airport's secondary entrance.

TRACT F

Situated along the east side of the runway, this 82-acre tract is ideal for aviation, MRO and cargo.

TRACT G

Featuring more than 250 acres, this is a premier tract offering excellent visibility along I-85.

TRACT H

Home to the future parallel runway, this tract is well suited for interim or shorter term development.

TRACT I

This 69-acre tract features frontage along GSP's runway and secondary entrance.

Transportation and the Inland Port

Centrally located between Atlanta, GA, and Charlotte, NC, Greenville-Spartanburg International Airport is ideally situated and configured for both manufacturing and distribution. The airport property itself is located directly along Interstate 85 and close to Interstate 26. Extensive rail service, enhanced by the presence of the South Carolina Inland Port, is already in place. Air cargo services, utilizing the airport's 11,000-foot runway, are well established and poised to add capacity as both the Inland Port and GSP360 increase demand. Add to all of this direct access to the Port of Charleston and you've got an intermodal transportation hub that's an ideal location for businesses and industries including but not limited to:

- Aviation
- Aviation Support
- Logistics/Distribution
- Office
- Retail
- Industrial
- Service
- Hospitality
- Flex/R&D
- Recreation/Public



Success breeds success

Join the growing list of successful companies who have chosen to make their homes in the Upstate.

Advance America

AMECO

AVX Corporation

BMW

Fluor Corporation

FUJIFILM Manufacturing USA, Inc.

General Electric

Guardian Building Products

Hartness International

Hubble Lighting

Kemet Corporation

Lockheed Martin Aircraft

Michelin North America

Milliken & Company

Nutra Manufacturing

Sage Automotive

ScanSource

Sealed Air Corporation

Synnex

Windstream



Milliken

amazon.com



The Upstate – Where businesses come to grow

Set against the backdrop of the Blue Ridge Mountains, with a growing population and thriving economy, the Upstate region is among the top-ranked business environments in America. Companies like Michelin, BMW, Fuji and others have been drawn to the area for countless reasons, including favorable tax rates, easy access, an affordable lifestyle and a workforce that is educated, qualified and plentiful. With the addition of the Inland Port and the expansion opportunities presented by GSP360, the Upstate’s business climate has never been more attractive.

The Upstate region is anchored by three significant metropolitan areas and their surrounding counties. Greenville is one of America’s fastest growing cities and has been recognized for everything from having one of “America’s Top Ten Downtowns” (*Forbes Magazine*) to being “The Knowledge Economy’s Next Big Thing” (*Fast Company*). Spartanburg is the fourth largest city in South Carolina, with a metro area population of more than 287,000. While the area boasts a rich history, a revitalized downtown and top-rated schools, several new downtown headquarters have made Spartanburg’s present and future even more exciting. Anderson is located along the shores of beautiful Lake Hartwell. Named an “All American City” by the National Civic League and nicknamed “The Electric City” for its early adoption of electricity in the 1880s, Anderson is home to a number of colleges and universities as well as a growing number of business enterprises in a variety of industries.

In a nutshell, the Upstate is the best of all worlds. A thriving economy supported by a pro-business mentality, set in a region combining unmatched natural beauty with the features and amenities that are attractive to employees and their families. Now, more than ever, the Upstate is poised for continued and accelerated growth, and GSP360 is at the heart of it all.



Greenville, SC



Spartanburg, SC



Anderson, SC



The GSP360 Mission

GSP360 is a land-use program committed to the legacy of carefully considered, responsible, sustainable and environmentally sensitive growth and development. Focused on serving the needs of business partners, tenants and stakeholders, GSP360 will support and fuel continued economic growth and development of the Upstate Region.

Learn more about opportunities that exist beyond the runway. Visit us online at GSP360beyondtherunway.com or call 864.848.6208.

